

e n g i n u i t y

BEKKER

Design of Foundation Systems

MuscleSlab is a fully integrated site specific designed foundation slab and piling for residential and commercial use. We have designed and developed this solution for difficult sites in Australia and New Zealand.

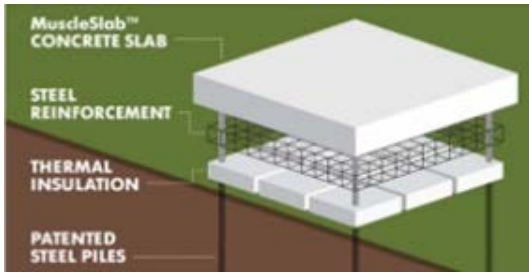
- Coastal Creep and Erosion
- Acid Sulphate Soils
- Landfill Methane Gas Emission Sites
- High water Table
- Earthquakes, Liquefaction, Lateral Spread
- Tree Roots, Easements and Services

- Flood Plains and Flood Paths
- Sloping Ground
- Soft Compressible Ground-peat, Swamps, Loose Soils
- Sites of Variable Sub-Grade Materials
- High-Density Areas - No Installation Vibration

muscleslab[®]

***Chifley Sports Ground Amenities Building, Bunnerong Road,
Randwick City Council
Methane Gas Emission Solution***

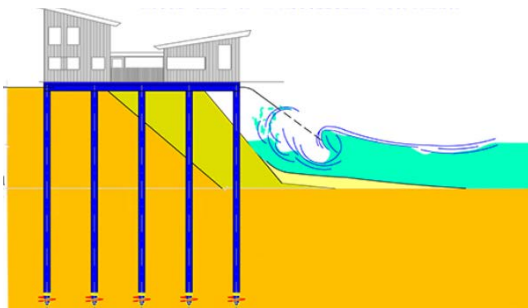
The engineering design of MuscleSlab, with deep piled foundations, provided a solution to Randwick City Council for building on poor ground with methane gas emission issues.



Surfview Road, Mona Vale, Sydney - Pittwater Council **Coastal Creep Solution**

Our solution to a problem site at risk of coastal erosion and sea level rise in accordance with the NSW Coastal Management Plan and Pittwater Council controls.

The building is now on solid foundations, with piling down to 9 metres to safeguard against any sand scouring and storm events. This is a sustainable engineering design with high thermal capacity.



[Click on the video to see how MuscleSlab can work for you](#)

Copyright © 2016 Bekker Engineering Design Buro Pty Ltd. Certified Practising Engineers. All rights reserved.

www.paulbekkerengineering.com.au

bekker@spin.net.au

(02)9960 6944 - 0411 570 948