

Protect your future investment and the environment by choosing MuscleSlab when building close to the coast.

e n g i n u i t y

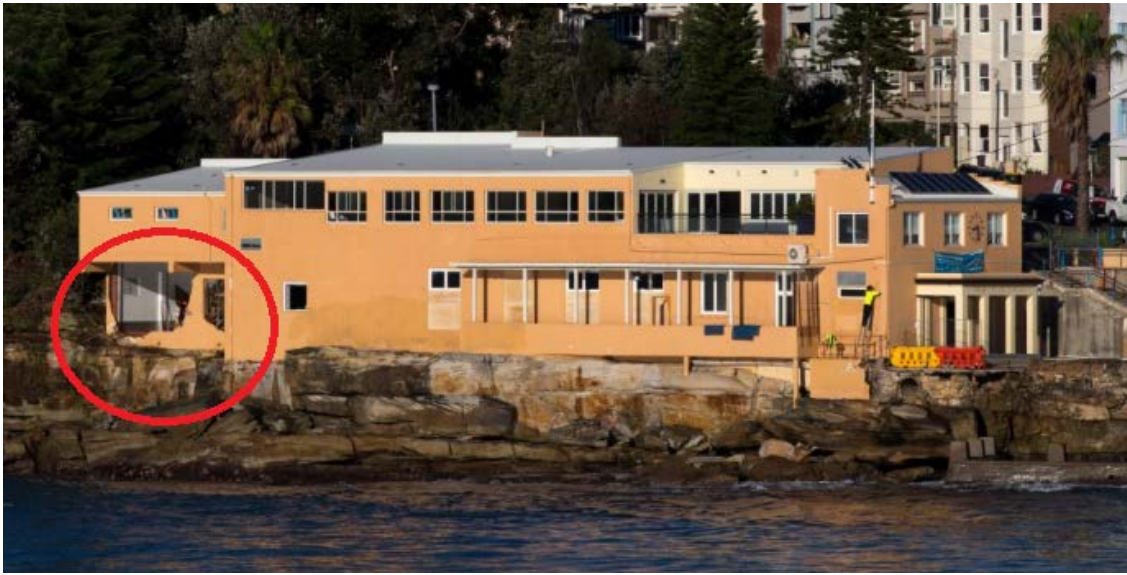
BEKKER

Design of Foundation Systems

With the recent storms in Sydney you can save your investment by installing MuscleSlab - a fully integrated site specific designed foundation slab and piling for residential and commercial use. We have designed and developed this solution for difficult sites in Australia and New Zealand. The process is approved by Council.



Private residences in Collaroy lost a swimming pool to the ocean due to severe weather and storms.



Coogee Surf Life Saving Club - damage from recent Sydney Storms



Collaroy Surf Life Saving Club - damage from recent Sydney Storms



Restaurant Milano in Lake Macquarie collapsed due to soil erosion problems.

MUSCLESLAB USES:

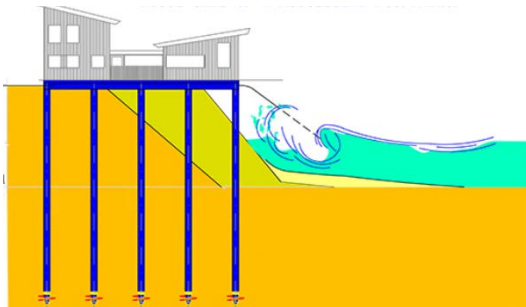
- Coastal Creep and Erosion
- Acid Sulphate Soils
- Landfill Methane Gas Emission Sites
- High water Table
- Earthquakes, Liquefaction, Lateral Spread
- Tree Roots, Easements and Services
- Flood Plains and Flood Paths
- Sloping Ground
- Soft Compressible Ground-peat, Swamps, Loose Soils
- Sites of Variable Sub-Grade Materials
- High-Density Areas - No Installation Vibration

muscleslab®

Surfview Road, Mona Vale, Sydney - Pittwater Council ***Coastal Creep Solution***

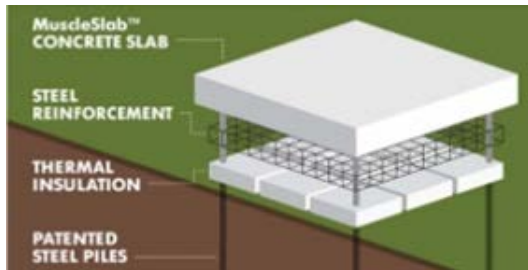
Our solution to a problem site at risk of coastal erosion and sea level rise in accordance with the NSW Coastal Management Plan and Pittwater Council controls.

The building is now on solid foundations, with piling down to 9 metres to safeguard against any sand scouring and storm events. This is a sustainable engineering design with high thermal capacity.



***Chifley Sports Ground Amenities Building, Bunnerong Road,
Randwick City Council
Methane Gas Emission Solution***

The engineering design of MuscleSlab, with deep piled foundations, provided a solution to Randwick City Council for building on poor ground with methane gas emission issues.



[Click on the video to see how MuscleSlab can work for you](#)

MuscleSlab suits your needs:

- Suitable for any shape or size of home or commercial building
- High thermal capacity
- Electrics and plumbing may be cast into the concrete
- Looks good and well accepted
- Engineered to suit the situation
- May be raised off the ground for flooding
- Stronger solution for the same price

The MuscleSlab system is:

- Quicker to install
- Brings no spoil to the surface restricting disturbance of suspect soils below
- Stronger
- No vibration installation
- Can be raised above flood levels

Copyright © 2016 Bekker Engineering Design Buro Pty Ltd. Certified Practising Engineers. All rights reserved.

Contact us to have a free site audit on your property

www.paulbekkerengineering.com.au

bekker@spin.net.au

(02)9960 6944 - 0411 570 948