

paul bekker engineering  
design buro Pty Ltd  
abn 89 118 772 517  
certified practising engineers  
1/17 grosvenor st  
neutral bay nsw 2089  
P O box 591  
northbridge nsw 1560  
ph (02) 99536244  
fax (02) 99536266  
mobile 0411 570 948  
email: bekker@spin.net.au

**e n g i n e e r i n g**

*Exceptional Architecture requires deft engineering design.*

*Some recent residential projects in Sydney*

**Alex Popov**

**Tina Engelen**

**RDO Design**

**CSA**

**Marchese Partners**

**Watershed**

**Squillace Nicholas**

**Manly**

**Paddington**

**Killara**

**Vaucluse**

**Palm Beach**

**Manly**

**Balgowlah**

img 1

img 2

img 3

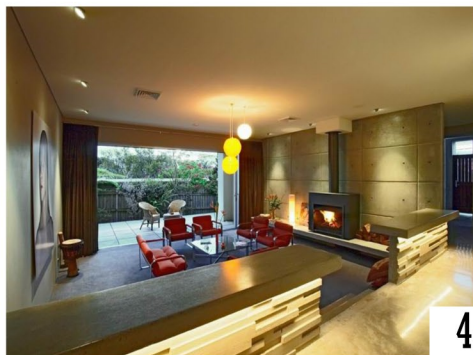
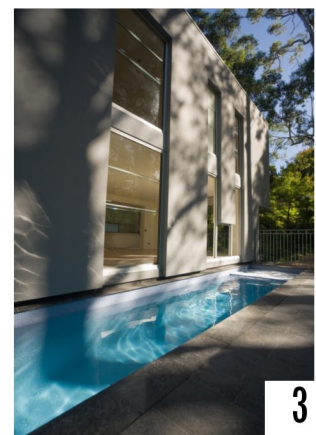
img 4

img 5

img 6

img 7

**BEKKER**



- design • documentation • inspections
- design & construct • structural advice
- on-site detention • stormwater & civil
- dilapidation & condition reports.
- drainage & structural concepts for DA
- insurance assessments
- accredited certifier

**Creativity + Practicality = Success**

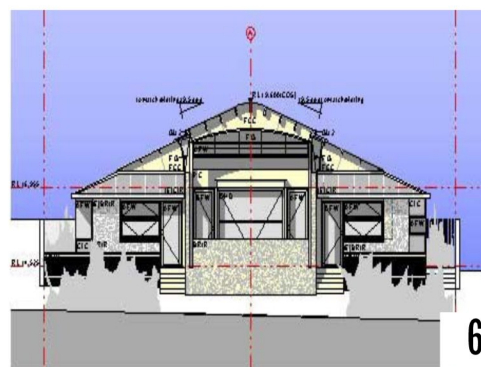
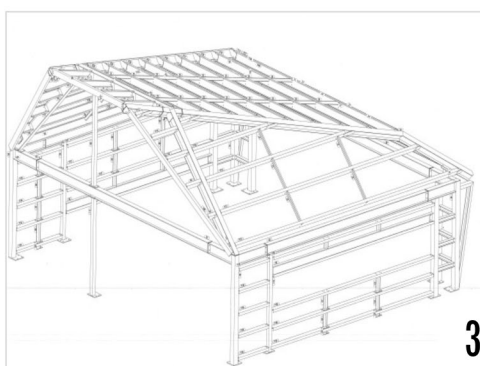
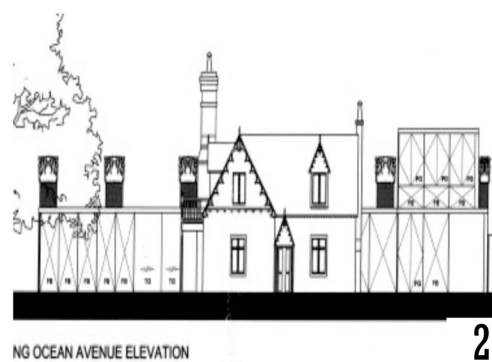
paul bekker engineering  
 design buro Pty Ltd  
 abn 89 118 772 517  
 certified practising engineers  
 1/17 grosvenor st  
 neutral bay nsw 2089  
 P O box 591  
 northbridge nsw 1560  
 ph (02) 99536244  
 fax (02) 99536266  
 mobile 0411 570 948  
 email bekker@spin.net.au

# BEKKER

e n g i n e e r i n g

**Exciting residential architecture remains  
 alive and well in Sydney...**

<b>Walter Barda</b>	<b>Watsons Bay</b>	img 1
<b>Thomas Jacobsen</b>	<b>Double Bay</b>	img 2
<b>Dale Jones-Evans</b>	<b>Cremorne</b>	img 3
<b>Daryl Jackson</b>	<b>Mosman</b>	img 4
<b>Peter Mayoh</b>	<b>McMahons Point</b>	img 5
<b>Redshift</b>	<b>Perigian Beach</b>	img 6



- design • documentation • inspections
- design & construct • structural advice
- on-site detention • stormwater & civil
- dilapidation & condition reports.
- drainage & structural concepts for DA
- insurance assessments
- accredited certifier

**Creativity + Practicality = Success**